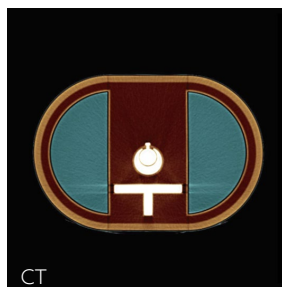


PH-74 | 41938-000

Bone Scintigraphy Quality Assurance Phantom

SPECT/CT

The world first standard QA phantom for Bone Scintigraphy, Bone SPECT/CT and NaF-PET

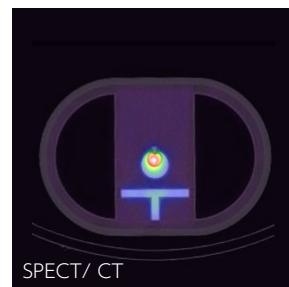


CT

SHOW MORE!



SPECT



SPECT/CT

FEATURES

| The phantom can represent either thoracic or lumbar region by changing the filling of side cavities

APPLICATIONS

| Bone scintigraphy
| Bone SPECT/CT
| NaF-PET

EVALUATION PARAMETERS

Visual Evaluation

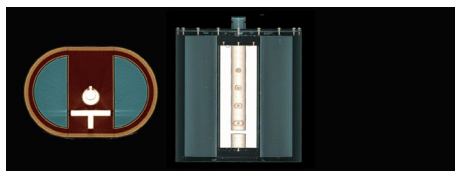
| Tumor detectability
| Image distortion
| Artifact

Quantitative Evaluation

| Contrast and count ratio between vertebral body and tumor
| Concentration linearity and recovery coefficient in the tumor
| Statistical noise
| FWHM at the spinous process (relative index of resolution)

Other

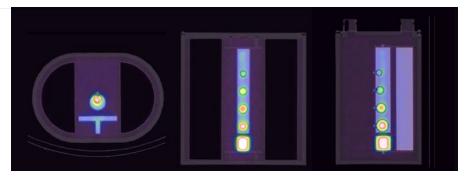
| Verification of scattering correction and attenuation correction



CT



SPECT



SPECT/CT

DESCRIPTIONS

SET INCLUDES

1 phantom	1 petroleum jelly
1 screwdriver	1 needle
1 funnel	1 manual

MATERIALS

Acrylic resin
Tough lung (PVA acetal compound)

SPECIFICATIONS

Phantom size:
OD: W310 x D210 x H355 mm ID: W290 x D190 x H300mm
W12.2 x D8.2 x H14 in W11.4 x D7.5 x H11.8 in