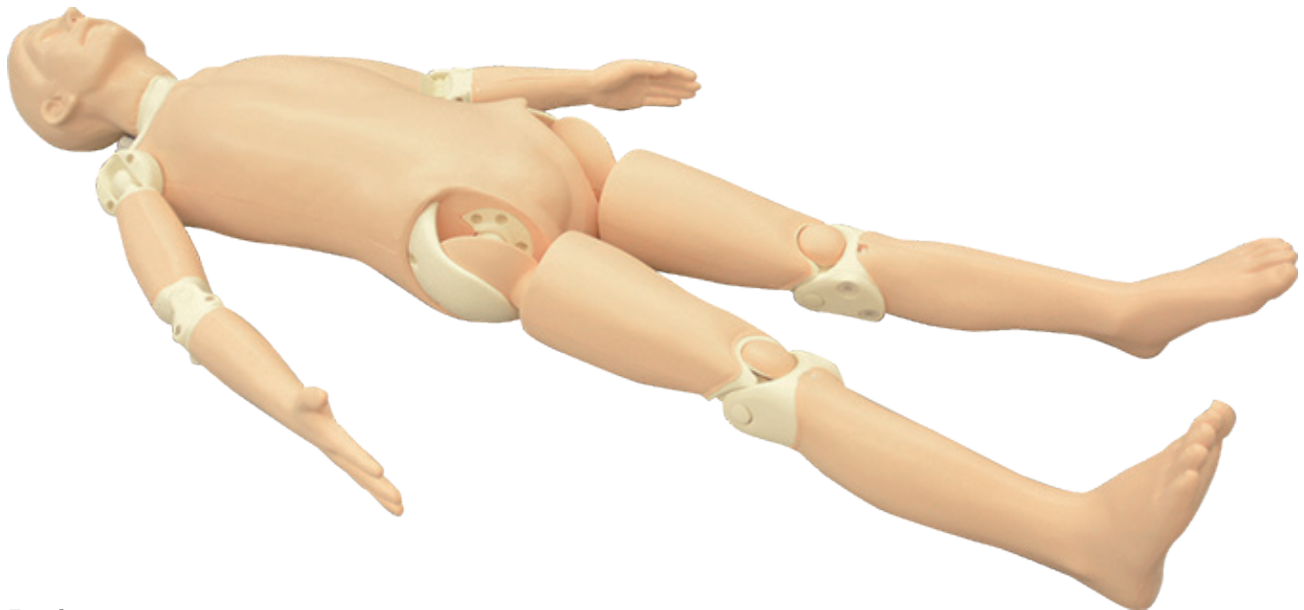


Product Code: Y04444-TX-0LT

X-Ray Training Phantom **PBU-POSE**

Student training is difficult in situations where social distancing must be maintained. This phantom helps prevent close interaction within your education programs during the **COVID-19 pandemic**.



■ Features

- Lightweight phantom (19kg) designed with an emphasis on positioning training.
- Tissue is made from urethane foam, creating a realistic and soft feel upon touch.
- This phantom retains clear image quality at a lower energy level, reducing strain on equipment and potential of exposure to technician .
- Each joint has the same range of motion as its corresponding point on the human body and can be positioned according to the anatomical location.
- Phantom has landmarks for positioning training.
- Phantom can be placed in a wheelchair.

■ Specification

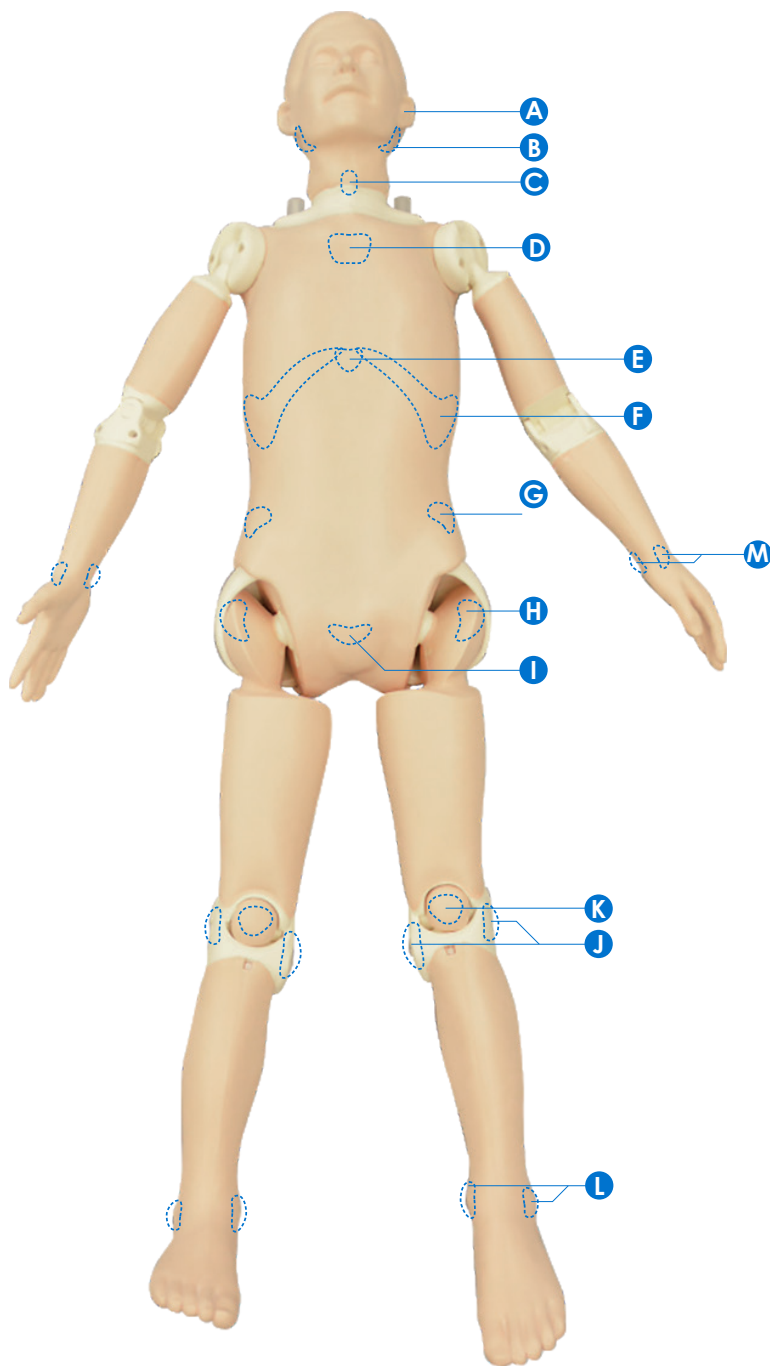
Body: Adult whole body model
Size: about 5.4ft
Chest measurement: about 33.4in
(body thickness: about 7.9in)
Waist circumference: about 29.5in
(body thickness: about 7.5in)
Weight: about 41lb(19kg)
Material: Soft tissue/Polyurethane resin (specific gravity 1.06)
Skeleton/epoxy resin (specific gravity 1.31)
Skull/urethane resin (specific gravity 1.11)

 **KYOTO KAGAKU co.,LTD**

For customers in U.S.A. and Canada
Kyoto Kagaku America Inc.

info@kkamerica-inc.com

X-Ray Phantom with landmarks for positioning training



I Skeleton and internal organs

"Skull", "Cervical Vertebra", "Vertebra", "Clavicle", "Scapula Ribs", "Sternum", "Hip bone", "Humerus", "Forearm", "Carpal", "Metacarpal", "Phalange", "Femur", "Patella", "Lower Leg", "Tarsal Bone", "Metatarsal Bone", "Toe bone"

"Lung" (without pulmonary blood vessels), "Heart", "Kidney"

I Landmark on the body surface

- A** External Acoustic Foramen
- B** Mastoid
- C** Seventh Cervical Vertebra
- D** Manubrium
- E** Xiphisternum
- F** Subcostal area
- G** Styloid Process of Radius
- H** Trochanter
- I** Superior Margin of the Symphysis Pubis
- J** Medial Epicondyle of Femur/Epicondylus Lateralis
- K** Patella
- L** Malleolus (Internal condyle /External condyle)
- M** Processus styloideus Ulnae

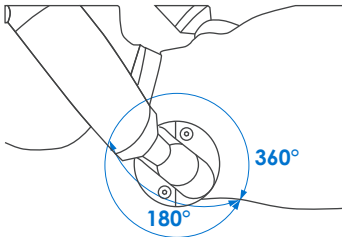
 **KYOTO KAGAKU co.,LTD**

For customers in U.S.A. and Canada
Kyoto Kagaku America Inc.

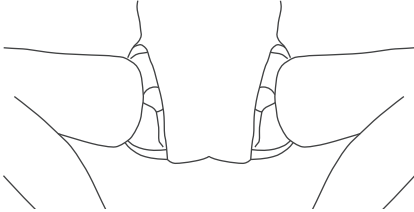
info@kkamerica-inc.com

Phantom is lightweight with each joint having the same range of motion as it's corresponding part on the human body.

Shoulders

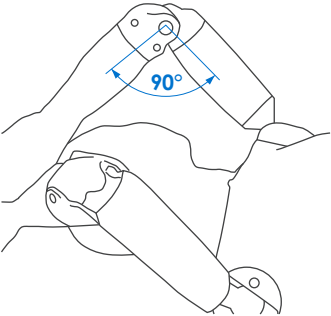


Hip joints



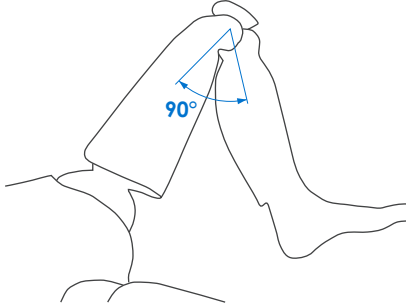
Can be reproduce the frog leg position

Elbows

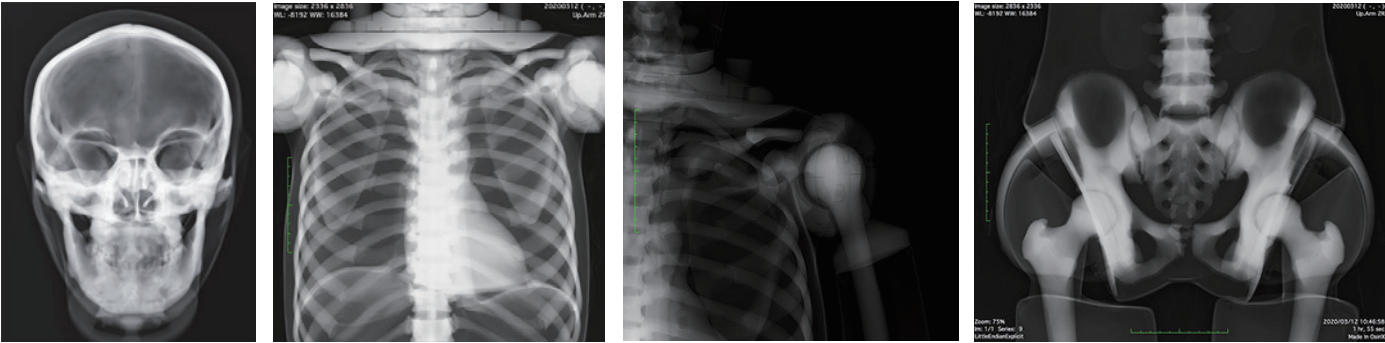


Can bend up to approx. 90 degrees.

Knees



■ X-Ray images



 KYOTO KAGAKU co.,LTD

For customers in U.S.A. and Canada
Kyoto Kagaku America Inc.

info@kkamerica-inc.com