



IMAGE GUIDED SPINAL INJECTIONS

Improve training outcomes of spine interventions with standardized skill training on simulator

- Life-like radiopacity for realistic x-ray images
- Realistic injection haptics with self-healing material
- Anatomically accurate bone structure
- Visually identifiable landmarks
- Cervical, thoracic and lumbar models
- Ideal replacement for cadaver specimens

Developed in collaboration with Dr. Markus Schneider, Bamberg

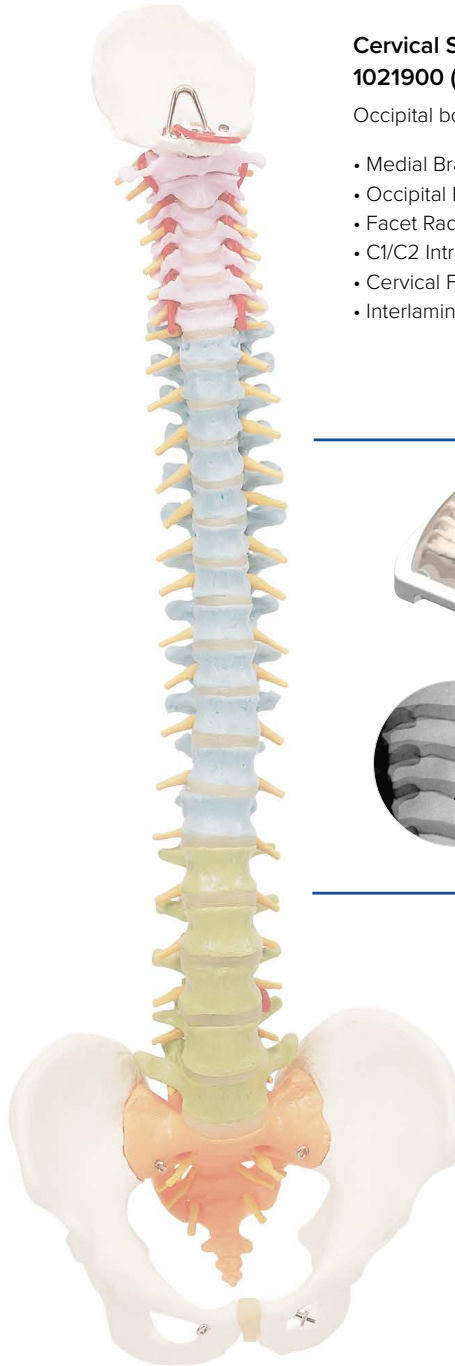
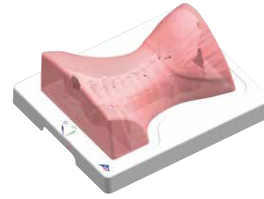
IMAGE GUIDED SPINAL INJECTION TRAINING

3 ideal solutions to replace cadavers in imaging courses & bio-skills labs

Cervical Spine Injection Trainer 1021900 (P67)

Occipital bone, vertebrae C1-T2, Ribs 1 and 2

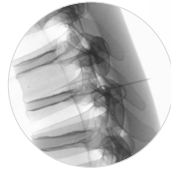
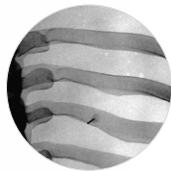
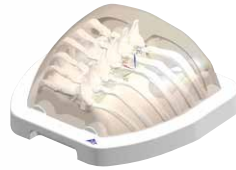
- Medial Branch Block
- Occipital Block
- Facet Radiofrequency Denervation
- C1/C2 Intraarticular
- Cervical Facet Intraarticular
- Interlaminar Epidural Injection



Thoracic Spine Injection Trainer 1021899 (P66)

Vertebrae T3-T8, Ribs 3-8

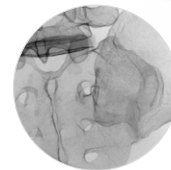
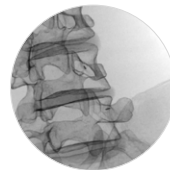
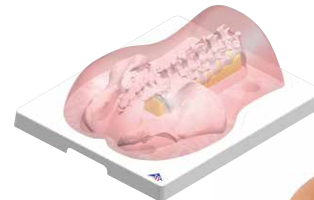
- Interlaminar Epidural Steroid Injection
- Thoracic Transforaminal Injection
- Thoracic Zygapophysial Joint
- Nerve (Medial Branch) Injection
- Intraarticular Injection
- Thoracic Zygapophysial Joint
- Intercostal Nerve Block (ICNB)



Lumbar Spine Injection Trainer 1021898 (P65)

• Coccyx, vertebrae S1-S3
(with sacral hiatus canal), T12-L5

- Transforaminal Epidural Steroid Injections
- Intralaminar Epidural Injection
- Facet Blocks
- Medial Branch Block (MBB/RF)
- S1-block
- Sacroiliac Joint Injection



The trainers are especially suitable for use in imaging courses thanks to these technical features:

- Self-Sealing material can be used repeatedly for injection training
- Completely portable with a secure transport box
- Durable construction, easy to clean

Each Image Guided Injection Trainer is delivered with:

- 1 secure transport box
- 1 protective cover
- 1 bottle of 20 ml lubricant
- 1 container of talcum powder



MORE INFORMATION AVAILABLE ONLINE AT 3BSCIENTIFIC.COM



3B Scientific GmbH • Rudorffweg 8 • 21031 Hamburg • 3bscientific.com
Telefon: +49 40 73966-0 • Fax: +49 40 73966-100 • E-mail: info@3bscientific.com